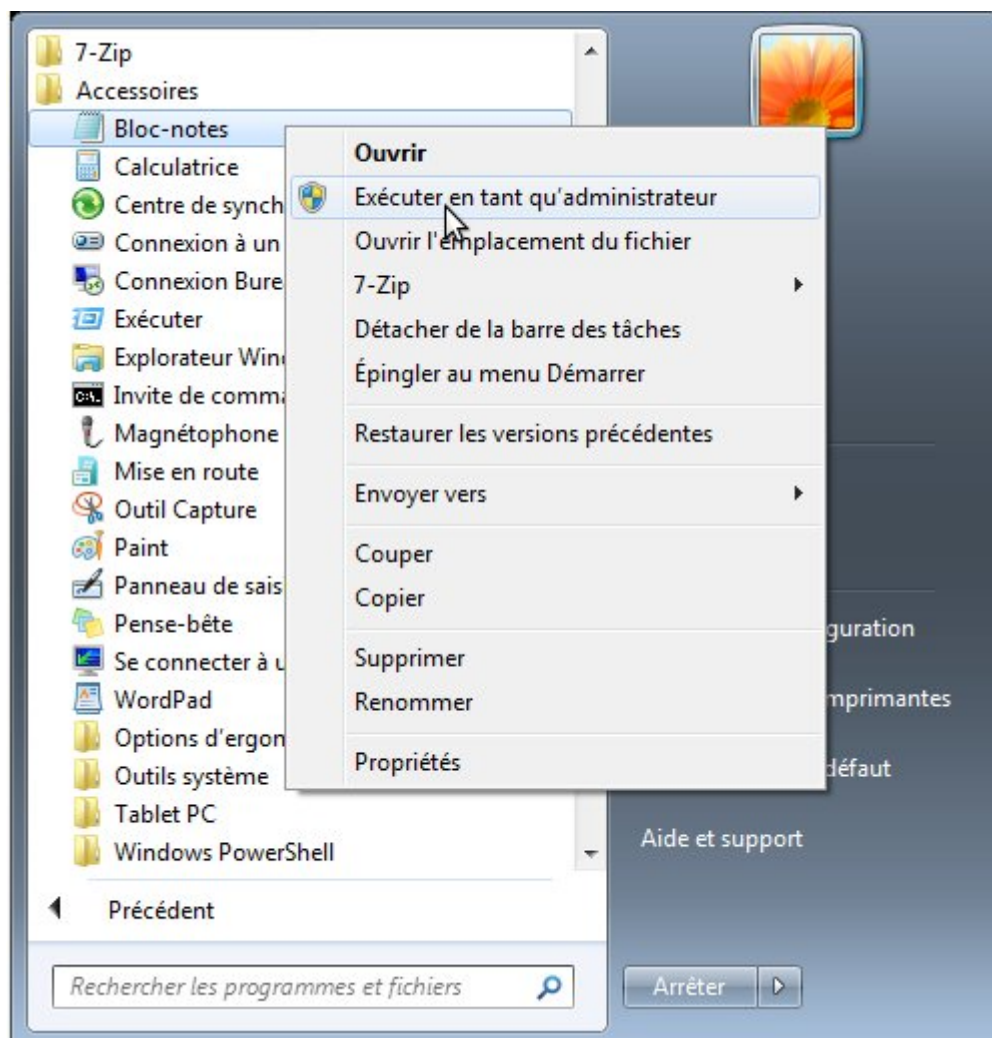
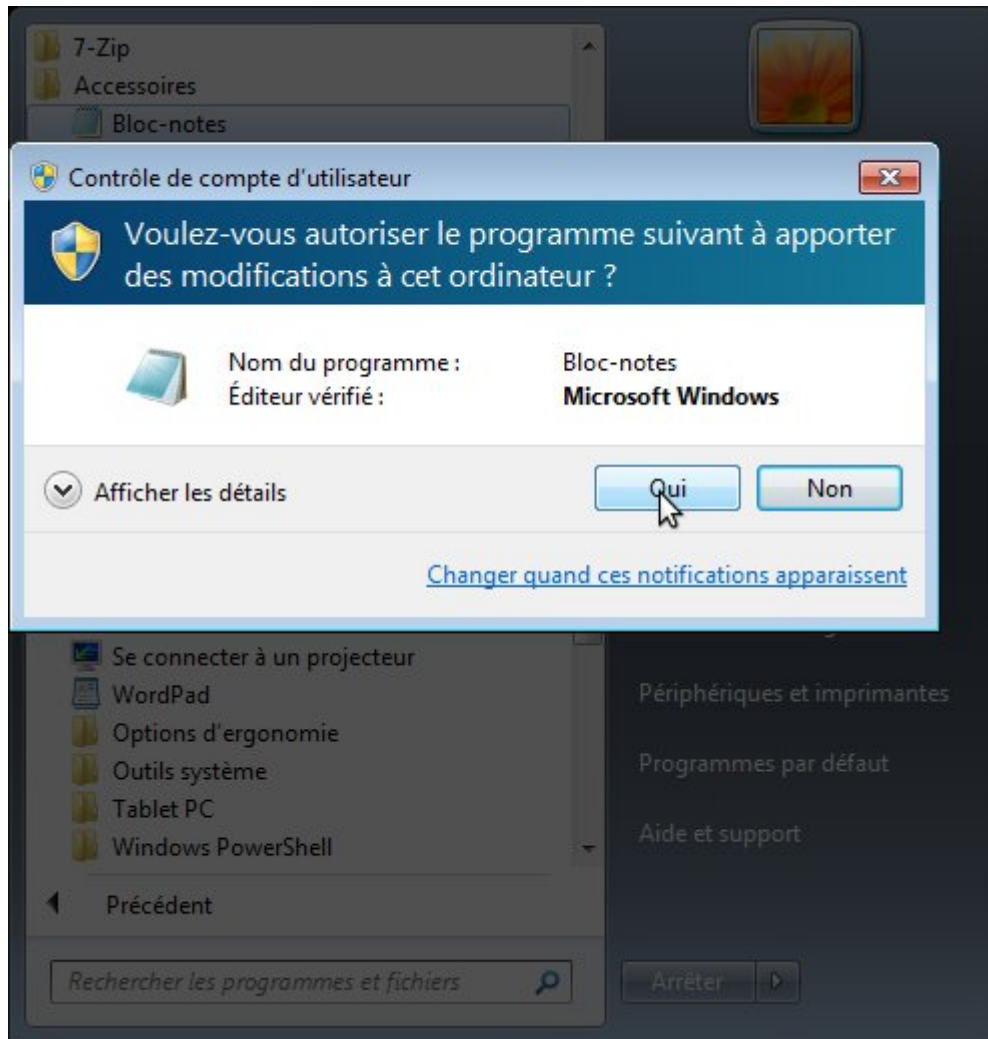


Voir un site en développement dissimulé par relation domaine/IP sur Windows

Ouvrir un Notepad en tant qu'administrateur

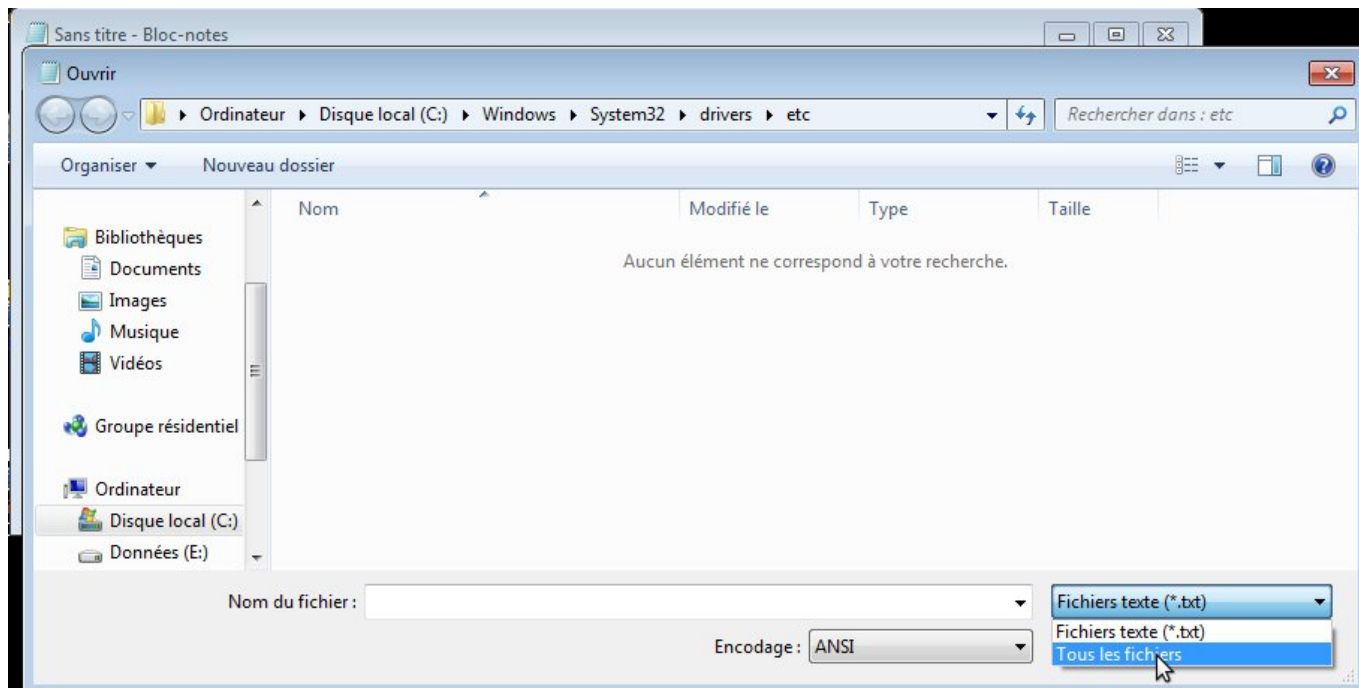


Autoriser

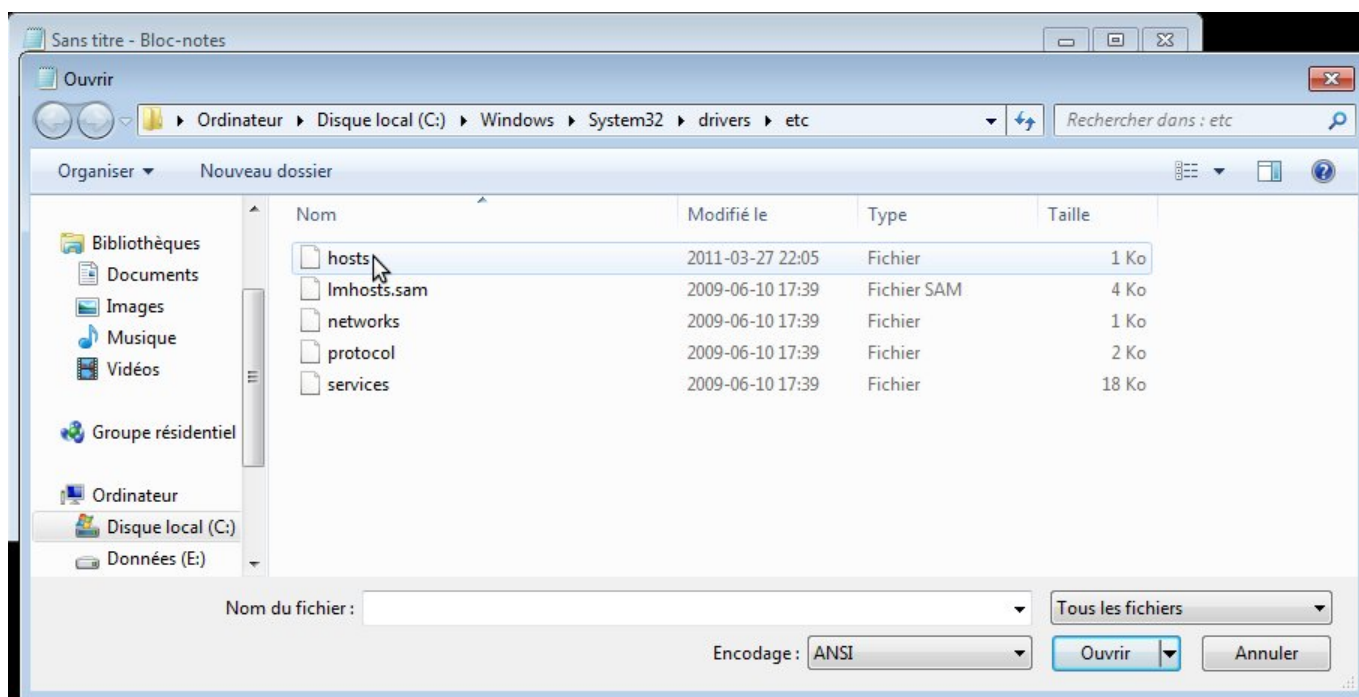


Ouvrir le répertoire C:\Windows\System32\drivers\etc et sélectionner tous les fichiers comme type de fichier

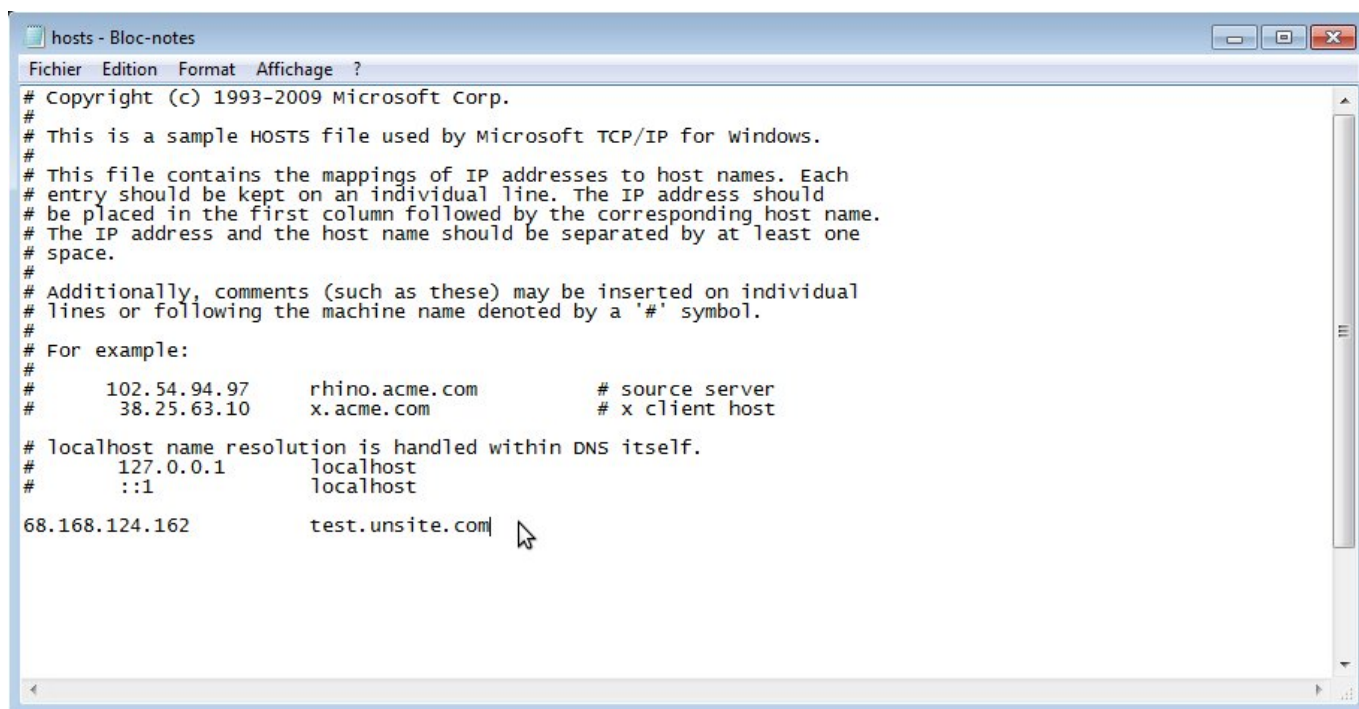




Sélectionner le fichier hosts

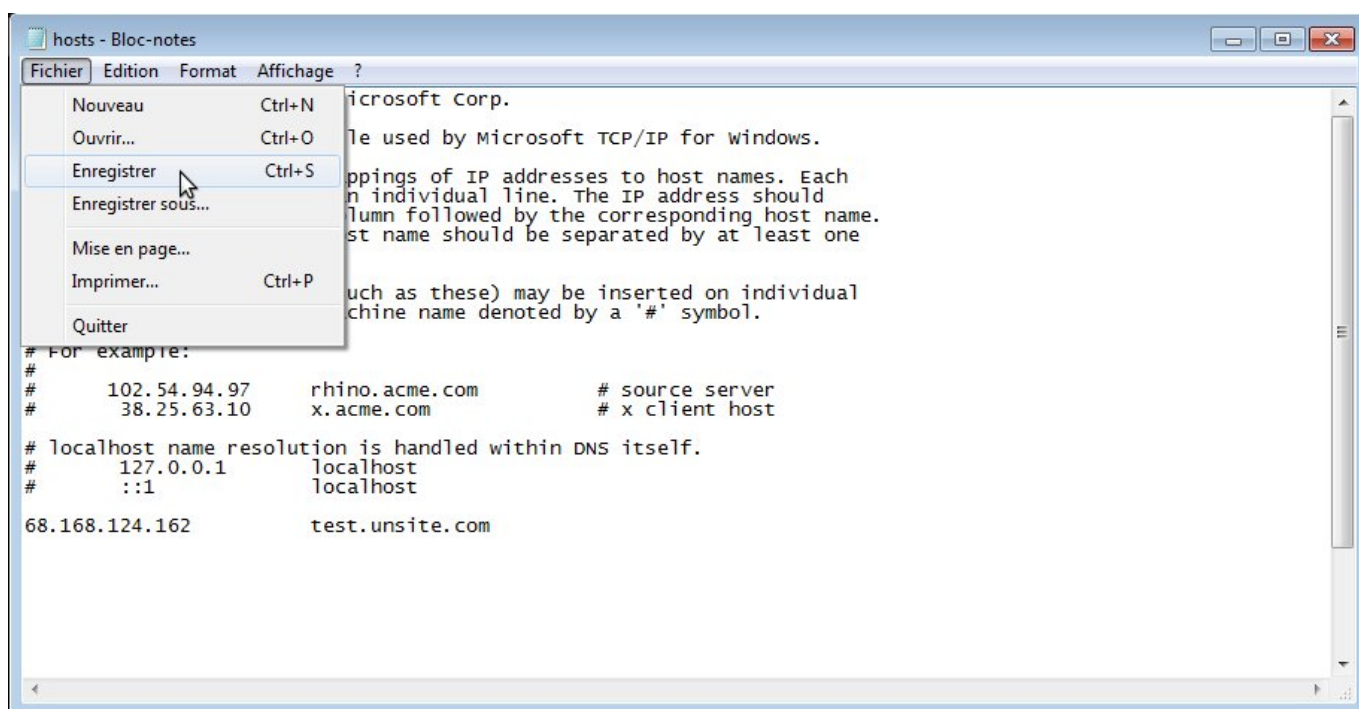


Enter l'adresse IP (p.e. 68.168.124.162) suivi d'une tabulation ou d'espace et le nom de domaine (p.e. test.unsite.com)



```
# Copyright (c) 1993-2009 Microsoft Corp.
#
# This is a sample HOSTS file used by Microsoft TCP/IP for Windows.
#
# This file contains the mappings of IP addresses to host names. Each
# entry should be kept on an individual line. The IP address should
# be placed in the first column followed by the corresponding host name.
# The IP address and the host name should be separated by at least one
# space.
#
# Additionally, comments (such as these) may be inserted on individual
# lines or following the machine name denoted by a '#' symbol.
#
# For example:
#
#       102.54.94.97       rhino.acme.com       # source server
#       38.25.63.10       x.acme.com           # x client host
#
# localhost name resolution is handled within DNS itself.
#       127.0.0.1         localhost
#       ::1               localhost
68.168.124.162           test.unsite.com
```

Sauvegarder le fichier et tester



```
# Copyright (c) 1993-2009 Microsoft Corp.
#
# This is a sample HOSTS file used by Microsoft TCP/IP for Windows.
#
# This file contains the mappings of IP addresses to host names. Each
# entry should be kept on an individual line. The IP address should
# be placed in the first column followed by the corresponding host name.
# The IP address and the host name should be separated by at least one
# space.
#
# Additionally, comments (such as these) may be inserted on individual
# lines or following the machine name denoted by a '#' symbol.
#
# For example:
#
#       102.54.94.97       rhino.acme.com       # source server
#       38.25.63.10       x.acme.com           # x client host
#
# localhost name resolution is handled within DNS itself.
#       127.0.0.1         localhost
#       ::1               localhost
68.168.124.162           test.unsite.com
```

Voir aussi :

- [Voir un site en développement](#)
- [Site Web](#)

Services reliés

- [kajoom.ca/services/conception](https://wiki.kajoom.ca/services/conception)
 - [kajoom.ca/services/hebergement](https://wiki.kajoom.ca/services/hebergement)
-

From:

<https://wiki.kajoom.ca/> - **Documentation de KAJOOM**

Permanent link:

https://wiki.kajoom.ca/site_web/developpement/voir_site_test/windows



Last update: **2014/11/03 11:02**